

Get Ready for Spring the Right (of Way) Way

Look Up, Look Down

Trees are a vital part of any rural or urban setting's quality of life. If you are getting ready to plant trees, bushes or shrubs, look around to see where overhead power lines may hinder future growth.

Call Klickitat PUD for assistance on tree selection and placement. Remember, a 2-foot-tall fir seedling can grow to more than 100-feet tall and 30- to 50-feet wide.

After you look up, look down for underground service. Never assume underground utility lines are buried deeper than you plan to dig. In some cases, utility lines are very close to the surface.

Landscaping and planting to hide underground utilities makes the equipment hard to find. This results in longer outages and is unsafe for workers.

Underground utility locating is free. There is no reason not to call 811, the national number to call for line-locating requests. Washington state law allows utilities three days to respond to your request, so plan ahead.

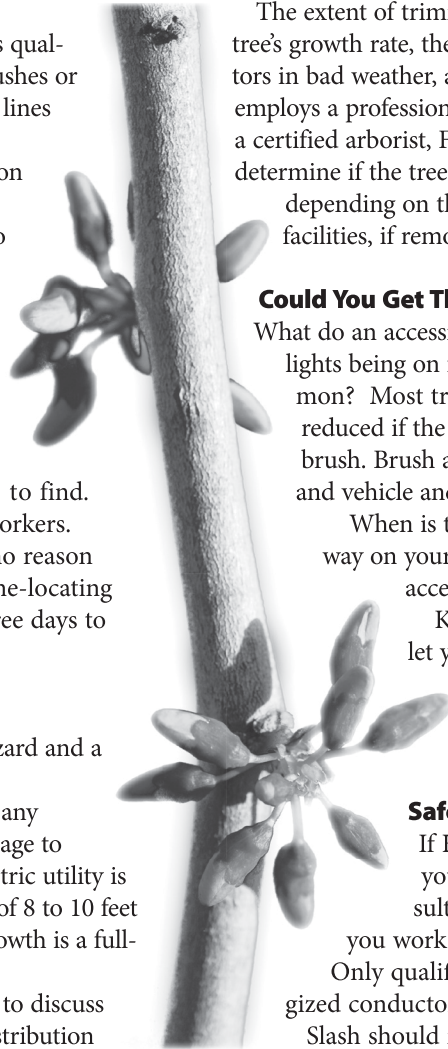
Right-of-Way Maintenance is Year-Round

Trees growing near power lines can be a safety hazard and a major cause of power outages.

According to the Revised Code of Washington, any time a potential threat exists that could cause damage to electric facilities from trees and vegetation, an electric utility is required to remove the hazard. With growth rates of 8 to 10 feet a year on some species, staying ahead of annual growth is a full-time job.

If there are trees in the KPUD right of way, call to discuss your options. Limbs and trees within 10 feet of distribution electrical lines and 23 feet of transmission lines are cut back. This helps ensure reliable electric service, and is done at no cost to you. See the graphic on page 29 for planting specifications.

Right-of-way easements grant Klickitat PUD the authority to trim trees without property-owner permission to provide for a safe and reliable electric system. However, KPUD respects the property of its customer-owners and, in most cases, notifies the property owner of the need for tree work before trimming is done. In unusual or emergency situations, it may be necessary to trim trees without first notifying the property owner to restore service or eliminate safety hazards.



The extent of trimming required is determined by the tree's growth rate, the movement of trees and conductors in bad weather, and the voltage of the lines. KPUD employs a professional tree-trimming crew that includes a certified arborist, Foreman Dale Stelter. Dale also helps determine if the tree is diseased, dead or dying and, depending on the proximity of the tree to electric facilities, if removal of the tree is required.

Could You Get There?

What do an accessible right of way and your lights being on faster in an outage have in common? Most tree-related outage times can be greatly reduced if the right of way is clear of trees and brush. Brush and trees inhibit visual inspections, and vehicle and foot traffic.

When is the last time you walked the right of way on your property? Are all of the poles easily accessible?

KPUD can field check your situation, let you know when our maintenance crews will be in your area, and make suggestions for clearing and maintaining your right of way.

Safe Logging Saves Lives!

If Klickitat PUD power lines are near your harvest area, please call for consultation. Options are available to help you work safely and keep the lights on.

Only qualified crews should work near energized conductors and around power lines.

Slash should not be piled and burned on power line rights of way. When replanting, observe dedicated easements and rights of way on the property.

Don't plant in these areas. Tall-growing trees will be cut down in the next maintenance cycle. ■

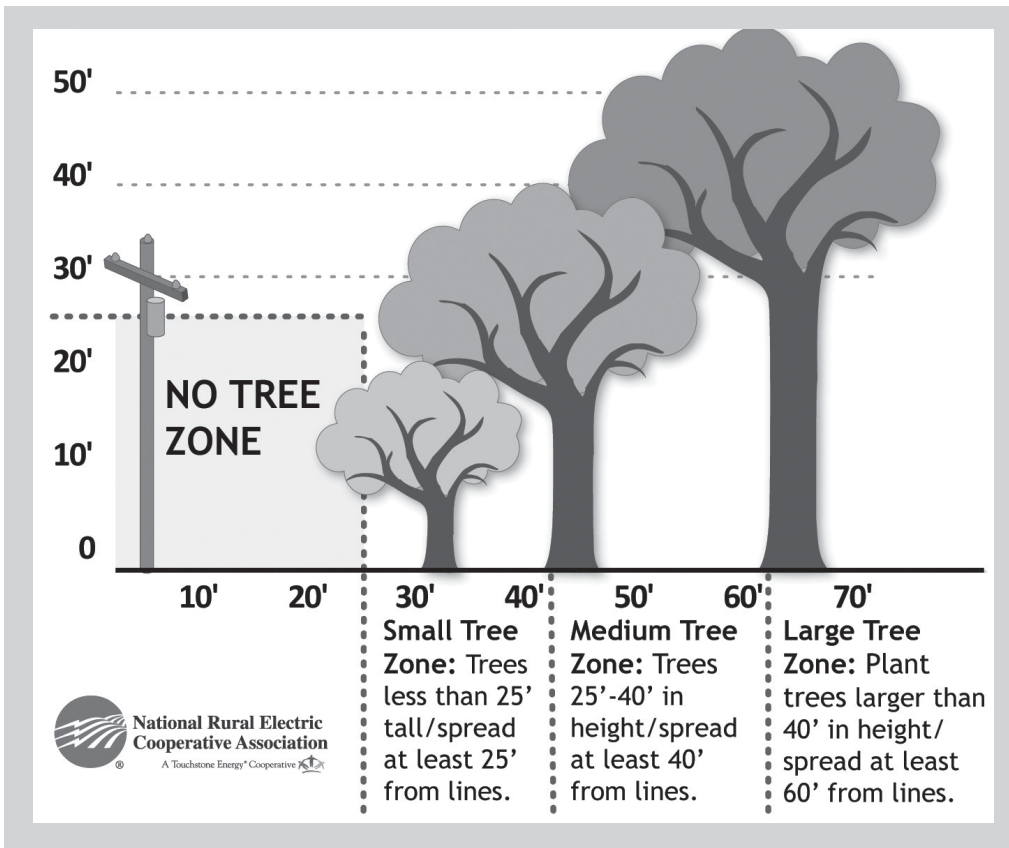
On the Schedule

2016 trimming will be focused on the west side of the county including Snowden and the Hwy 141 corridor north of the Gilmer Substation.

COMMUNITY CALENDAR

April

- 1-10**—Columbia Gorge Discovery Center's spring break, free admission for kids, The Dalles
- 3**—Jam session at the American Legion, 1-4 p.m., Goldendale
- 4**—Klickitat planned power outage from 9:30 a.m. to 3:30 p.m. – www.klickitatpud.com/news/outageNotices.aspx
- 7**—Comic and ventriloquist Jeff Dunham, Moda Center, Portland
- 8**—Laser tag, 9 a.m. to 5 p.m., Thompson Park, The Dalles,
- 8-10**—Columbia River Cowboy Gathering & Music Festival, Benton County Fairgrounds, Kennewick
- 8-10**—Bend Spring Festival at NorthWest Crossing, Bend
- 9**—2nd Saturday at WAAAM Air & Auto Museum, Hood River
- 9-10**—GPAA Gold and Treasure Show, Expo Center, Portland
- 12**—Klickitat PUD Commission meeting, 2 p.m., Goldendale
- 16**—Ranch Sorting, Hood River County Fairgrounds
- 16**—Hood River Hard-Pressed Cider Fest, 3315 Stadelman Drive
- 16-17**—Lakeside Gem & Mineral Club Show, Benton County Fairgrounds, Kennewick
- 16-17**—Equine Trail Sports Ride, BC Mello Arena, 176 Horseshoe Bend Road, Goldendale
- 16-17**—Collectors West Gun & Knife Show, Expo Center, Portland
- 21-24**—Just Between Friends children's clothing consignment sale, Expo Center, Portland
- 22-24**—Open studio tours featuring 44 artists, www.gorgeartists.org
- 22-23**—Community garage sale, Skamania County Fairgrounds, Stevenson
- 4/23-24**—Ratz "Spring Free-4-All" at Maryhill Loops Road. Weekend of fun and skateboarding, not a competition. www.maryhillratz.com/
- 26**—Klickitat PUD Commission meeting, 2 p.m. Goldendale
- 29-31**—Ghost town tours & workshop, Balch Hotel, Dufur, OR, www.balchhotel.com/events#ghost-town-tour
- 4/29-5/01**—NexStar National Talent Competition, Expo Center, Portland



Be Power Friendly When Planting Trees

Trees beautify homes and property, but care should be taken when planting trees near power lines.

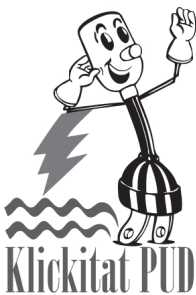
Each year, power outages are caused by storms that bring trees or limbs down on lines.

You can help minimize outages by taking a

power-friendly approach to landscaping. Avoid planting trees under power lines.

If you are planting within 30 feet of a power line, plant trees that will grow no higher than 25 feet. Larger trees should be planted more than 30 feet from lines. ■

KPUD Holds Annual Customer Meetings



During the next few months, Klickitat PUD staff and commissioners will visit city councils and community groups throughout Klickitat County.

The upcoming schedule is:

- April 4—Lyle Lions Club, 6:30 p.m., Community Center
- April 14—Dallesport/Murdock Town Council, 7 p.m., Community Center, Dallesport
- April 26—RimRock Owners Association, 6 p.m., 53 Adams Loop Road, Goldendale
- April 28—Bickleton Council, 6:30 p.m., Market Street Café,