

Get Ready for Summer the Right (of Way) Way

Look Up, Look Down

Trees are a vital part of any rural or urban setting's quality of life. If you are getting ready to plant trees, bushes or shrubs, look around to see where overhead power lines may hinder future growth.

Call Klickitat PUD for assistance on tree selection and placement. Remember, a 2-foot-tall fir seedling can grow to more than 100-feet tall and 30- to 50-feet wide.

After you look up, look down for underground service. Never assume underground utility lines are buried deeper than you plan to dig. In some cases, utility lines are very close to the surface.

Landscaping and planting to hide underground utilities makes the equipment hard to find. This results in longer outages and is unsafe for workers.

Underground utility locating is free. There is no reason not to call 811, the national number to call for line-locating requests. Washington state law allows utilities three days to respond to your request, so plan ahead.

Right-of-Way Maintenance is Year-Round

Trees growing near power lines can be a safety hazard and a major cause of power outages.

According to the Revised Code of Washington, when a hazard exists that could cause damage to electric facilities from trees and vegetation, an electric utility is required to remove the hazard.

If there are trees in the KPUD right-of-way, call to discuss your options. Limbs and trees within 10 feet of distribution electrical lines and 23 feet of transmission lines are cut back. This helps ensure reliable electric service, and is done at no cost to you. See the graphic on page 29 for planting specifications.

Right-of-way easements grant Klickitat PUD the authority to trim trees without property-owner permission to provide for a safe and reliable electric system. However, KPUD respects the property of its customer-owners and, in most cases, notifies the property owner of the need for tree work before trimming is done. In unusual or emergency situations, it may be necessary to trim trees without first notifying the property owner to restore service or eliminate safety hazards.

The extent of trimming required is determined by the tree's

growth rate, the movement of trees and conductors in bad weather, and the voltage of the lines. KPUD employs a professional tree-trimming crew that includes a certified arborist, Foreman Dale Stelter.

Could You Get There?

What do an accessible right-of-way and your lights being on faster in an outage have in common? Most tree-related outage times can be greatly reduced if the right-of-way is clear of trees and brush. Brush and trees inhibit visual inspections, and vehicle and foot traffic.

When is the last time you walked the right-of-way on your property? Are all of the poles easily accessible?

KPUD can field check your situation, let you know when our maintenance crews will be in your area, and make suggestions for clearing and maintaining your right-of-way.

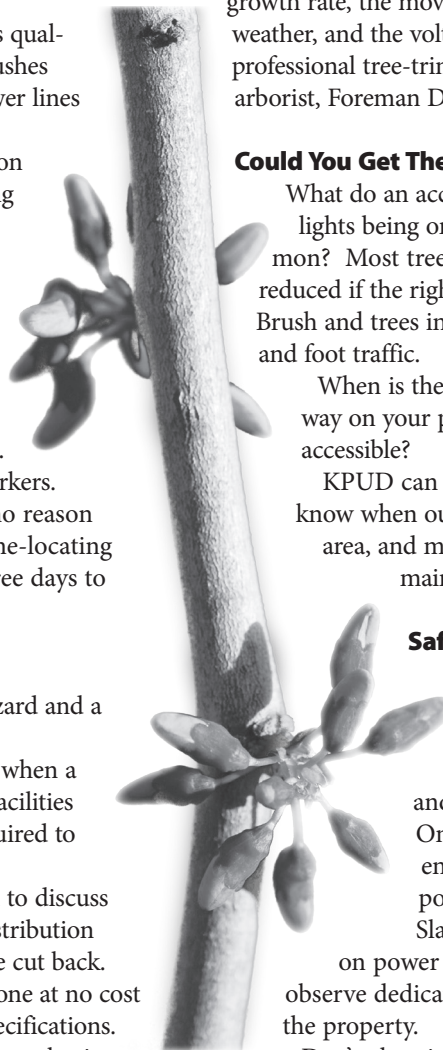
Safe Logging Saves Lives!

If Klickitat PUD power lines are near your harvest area, please call for consultation. Options are available to help you work safely and keep the lights on.

Only qualified crews should work near energized conductors and around power lines.

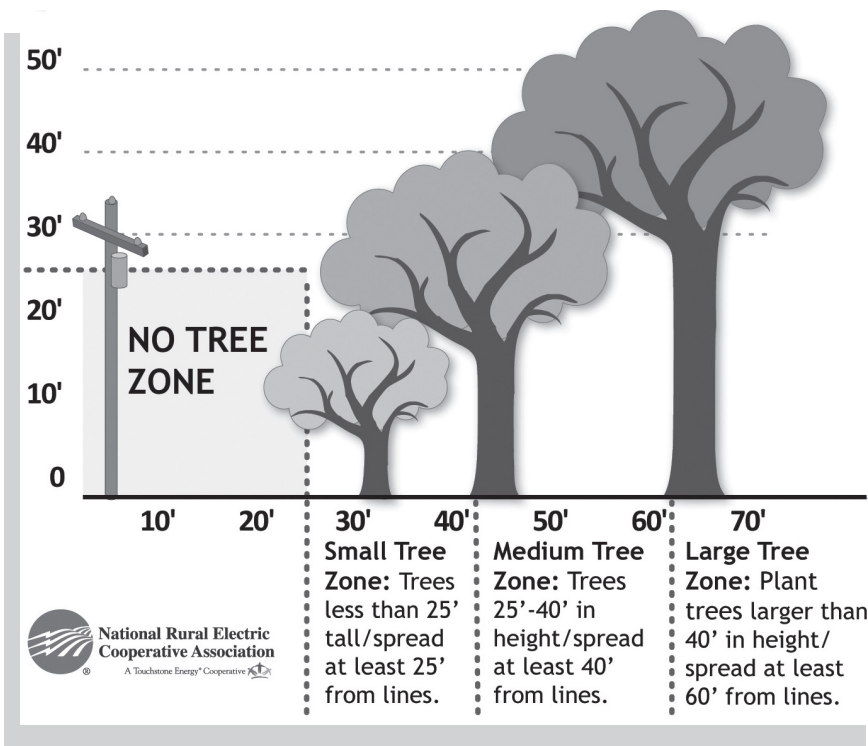
Slash should not be piled and burned on power line rights-of-way. When replanting, observe dedicated easements and rights-of-way on the property.

Don't plant in these areas. Tall-growing trees will be cut down in the next maintenance cycle. ■



On the Schedule

Summer and fall trimming will be focused in Trout Lake, Snowden, Hwy 97 to Satus Pass and the northwestern areas of Goldendale.



Power-Friendly Planting

Trees beautify homes and property, but care should be taken when planting trees near power lines.

Each year, power outages are caused by storms that bring trees or limbs down on lines.

You can help minimize outages by taking a power-friendly approach to landscaping. Avoid planting trees under power lines. If you are planting within 30 feet of a power line, plant trees that will grow no higher than 25 feet.

Larger trees should be planted more than 30 feet from lines.

Planting the right tree in the right place not only reduces the chance of an outage, it can help increase your energy efficiency.

The Arbor Day Foundation encourages thoughtful practices that help preserve community trees, while also benefiting electric co-op consumers.

Trees can help cool your home and

neighborhood, break cold winds to lower your heating costs and provide food for wildlife.

Properly placed trees can lower line clearance costs for utility companies, reduce tree mortality and result in healthier community forests.

Tall trees surrounding your home—such as maple, oak, pine and spruce—provide summer shade to lower cooling costs and keep out cold winter winds.

Medium trees, 40 feet or less in mature height, might include Washington hawthorne and golden raintree, while smaller trees suitable for planting beneath utility lines might include redbud, dogwood and crabapple.

When planting near utility lines, consider a 25-foot maximum mature height and 20-foot spread.

To learn more about which trees might work best in your yard, visit www.arborday.org. ■

COMMUNITY CALENDAR

June

- 2-4**—3rd annual Pickers Fest, Ekone Park, Goldendale
- 2-4**—White Salmon Spring Festival, Rheingarten Park, White Salmon
- 3**—Wishram High School graduation
- 3**—Lyle Lions Pancake Breakfast, 7-10 a.m., Community Center, Lyle
- 3**—Sesame Street Live with Elmo, 10:30 a.m., 2 p.m., 5:30 p.m., Memorial Coliseum, Portland
- 5**—Lyle Lions Meeting; potluck at 6 p.m., meeting at 6:30 p.m., Community Center, Lyle
- 6**—Senior Meals, noon, Community Center, Lyle
- 7**—KPUD annual business update at White Salmon City Council meeting, 6 p.m.
- 9**—Goldendale High School graduation, 7 p.m.
- 9-11**—107th Annual Alder Creek Pioneer Picnic & Rodeo, Cleveland
- 9-11**—Bluegrass Festival and Dutch Oven Rendezvous, Sacajawea State Park, Pasco
- 9-11**—Boat Races, Howard Amon Park, Richland
- 9-11**—76th annual Sisters Rodeo
- 10**—Columbia High School Graduation, 11 a.m., Gerald Miller Memorial Gymnasium, White Salmon
- 10**—Rose Festival & Spirit Mountain Casino Grand Floral Parade, Memorial Coliseum, Portland
- 13**—Senior Meals, noon, Community Center, Lyle
- 13**—Klickitat PUD Board of Commissioners' meeting, 2 p.m., Goldendale
- 15**—Hogs & Dogs Family Festival, Bombing Range Sports Complex, West Richland
- 16**—Trout Lake High School graduation, 6 p.m.
- 16**—2nd Annual Ketchum Kalf Bull Bash, Glenwood
- 16-17**—Inaugural citywide yard sales, Goldendale. Contact Chamber of Commerce for more information
- 17-18**—83rd annual Ketchum Kalf NPRA/ProWest/ICA Sanctioned Rodeo, 12:30 p.m., Glenwood
- 19**—Lyle Lions Club meeting; potluck at 6 p.m., meeting at 6:30 p.m., Community Center,
- 20**—Senior Meals, noon, Community Center, Lyle
- 22**—Farmers market opens, Rheingarten Park, White Salmon (Tuesdays through October)
- 23-25**—Cool Desert Nights classic cars, street rods and motorcycles, off George Washington Way, Richland
- 23-25**—18th annual Prairie Firehouse Sale, Friday and Saturday from 9 a.m. to 5 p.m.; Sunday from 9 a.m. to 3 p.m. at High Prairie Community Center, 701 Struck Road
- 24**—Tango lesson and dance, 6-9 p.m., Maryhill Museum, Goldendale, call to register
- 24**—Mt. Adams Country Bicycle Tour, Trout Lake, www.troutlakewashington.com/mt-adams-bicycle-tour
- 24-25**—Historic Maryhill Loops coaching, racing and skateboarding, Goldendale
- 25**—Santana in concert at Maryhill Winery, Goldendale
- 27**—Klickitat PUD Board of Commissioners' meeting, 2 p.m., Goldendale
- 27**—Senior Meals, noon, Community Center, Lyle